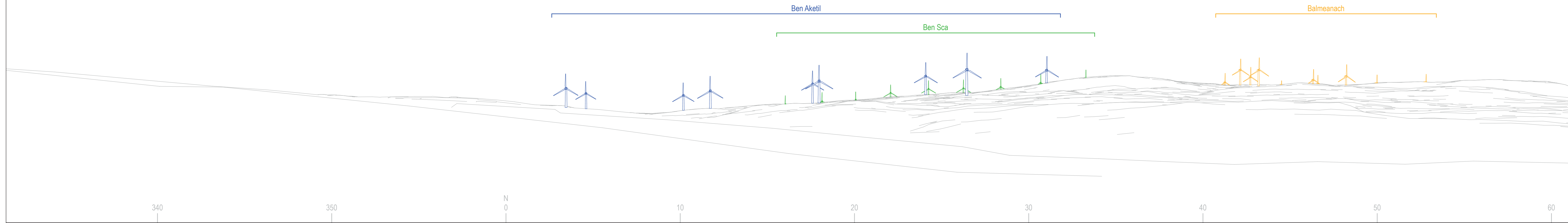
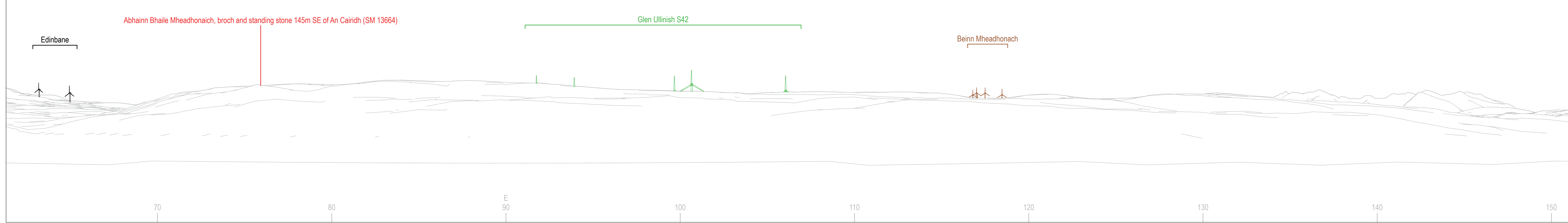


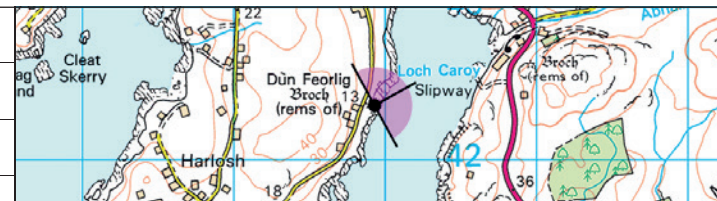
WIRELINER DRAWING



WIRELINER DRAWING



Date February 2023	By SPB
Image Size 820 x 130mm	QA DT
Paper Size 840 x 297mm	Rev -
0262-CH-Visuals.indd	



Notes:
 1) This visualisation is a cylindrical projection panorama; it provides landscape and visual context only.
 2) This data has been output directly from the wireline model; it ignores screening effects of woodland and other intervening objects.
 3) All directions given as bearings relative to Grid North (BNG).
 4) Location map scale: 1:50,000

Contains Ordnance Survey data © Crown copyright and database right 2023
 © Crown copyright. All rights reserved. 2023 Licence number: 100020565

Viewpoint Information:
 Grid Reference: 129930E 842357N
 Ground Height: 6.7m AOD
 Direction of Centre of View: 3
 Horizontal Field of View: 90°
 Vertical Field of View: 14.2°
 Principal Distance: 522mm

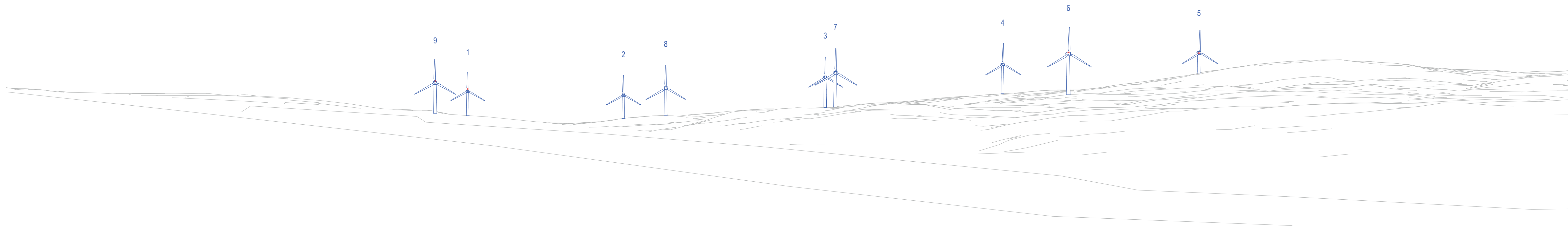
Layout Information:
 Layout: ben-aketil.wfl
 Hub Height: 122.5m
 Height to Blade Tip: 200m
 Nearest Visible Turbine: TG @ 4659m
 Number of Sets of Tips Visible: 2
 Number of Hubs Visible: 2
 9

Wireline Key:

 Ben Aketil Wind Farm Repowering and Extension
 Operational / Under Construction
 Consented
 Scoping (each proposal is coloured individually)



Ben Aketil Wind Farm Repowering and Extension
Cultural Heritage Figure 10.8: Dun Feorlig, broch 230 m NNE of Feorlig Farm (SM 3494)
WIRELINER VISUALISATION 10.8a



Date February 2023	By SPB		<p>Notes:</p> <ol style="list-style-type: none"> This visualisation is a planar projection panorama. View flat at a comfortable arm's length. This data has been output directly from the wireline model. It ignores screening effects of woodland and other intervening objects. All directions given as bearings relative to Grid North (BNG). Location map scale: 1:50,000 <p><small>Contains Ordnance Survey data © Crown copyright and database right 2023 © Crown copyright. All rights reserved. 2023 Licence number: 10002565</small></p>
Image Size 820 x 260mm	QA DT		
Paper Size 840 x 297mm	Rev -		

Viewpoint Information:	
Grid Reference:	129930E 842357N
Ground Height:	6.7m AOD
Direction of Centre of View: ¹	16.3°
Horizontal Field of View:	53.5°
Vertical Field of View:	18.2°
Principal Distance:	812.5mm

Layout Information:	
Layout:	ben-aketil.wfl
Hub Height:	122.5m
Height to Blade Tip:	200m
Nearest Visible Turbine:	T6 @ 4659m
Number of Sets of Tips Visible: ²	9
Number of Hubs Visible: ²	9

Wireline Key:	
	Ben Aketil Wind Farm Repowering and Extension
	Operational / Under Construction



Ben Aketil Wind Farm Repowering and Extension
Cultural Heritage Figure 10.8: Dun Feorlig, broch 230 m NNE of Feorlig Farm (SM 3494)
WIRELINE VISUALISATION 10.8b