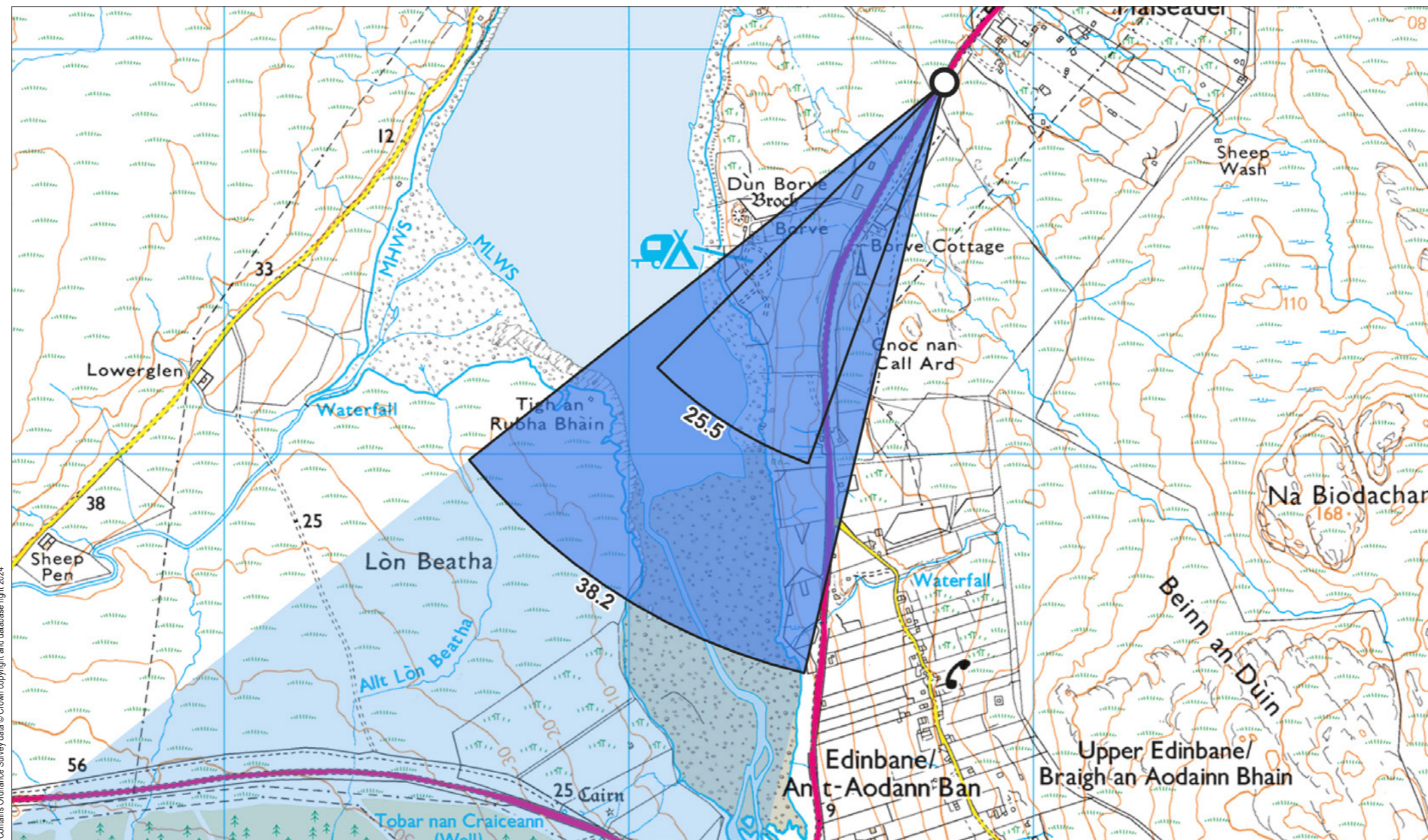


Viewpoint 6: A850 Flashader



Contains Ordnance Survey data © Crown copyright and database right 2024

File Ref: 0915-Highland-Council-200m-tp-visuals

Grid Ref: 134780, 852920 Distance to nearest visible turbines: 5715m AOD: 34.4m

This viewpoint is located on a grass verge to the western side of the A850 to the south of Flashader. The viewpoint is at the southern end of a cut, about 20 meters downhill from a set of speed limit signs. There is no parking at the viewpoint. There is room for parking at the church in Flashader, or at a junction around 200-300 meters north of the viewpoint.



Viewpoint 6: A850 Flashader

When viewed at a comfortable arm's length (approx. 500 mm), this printed image is representative of our detailed central vision, but is not representative of scale and distance.

Planar Projection

Distance to nearest turbine: 5.72 km

Camera: Nikon z6 2 - Full Frame

Focal length: 50 mm

Camera Height: 1.5 m

Date: 30/08/2022

Time: 08:46

SUBMITTED LAYOUT - 200m tip



Viewpoint 6: A850 Flashader

This image should be viewed at a comfortable arm's length (Approx. 500 mm)

Planar Projection

Distance to nearest turbine: 5.72 km

Camera: Nikon z6 2 - Full Frame

Focal length: 75 mm

Camera Height: 1.5 m

Date: 30/08/2022

Time: 08:46

SUBMITTED LAYOUT - 200m tip



Viewpoint 6: A850 Flashader - Monochrome Analysis

This image should be viewed at a comfortable arm's length (Approx. 500 mm)

Planar Projection

Distance to nearest turbine: 5.72 km

Camera: Nikon z6 2 - Full Frame

Focal length: 75 mm

Camera Height: 1.5 m

Date: 30/08/2022

Time: 08:46

SUBMITTED LAYOUT - 200m tip (CONSENTED CUMULATIVE)

Ben Sca Redesign



Viewpoint 6: A850 Flashader - Monochrome Analysis

This image should be viewed at a comfortable arm's length (Approx. 500 mm)

Planar Projection

Distance to nearest turbine: 5.72 km

Camera: Nikon z6 2 - Full Frame

Focal length: 75 mm

Camera Height: 1.5 m

Date: 30/08/2022

Time: 08:46

SUBMITTED LAYOUT - 200m tip (PROPOSED CUMULATIVE)