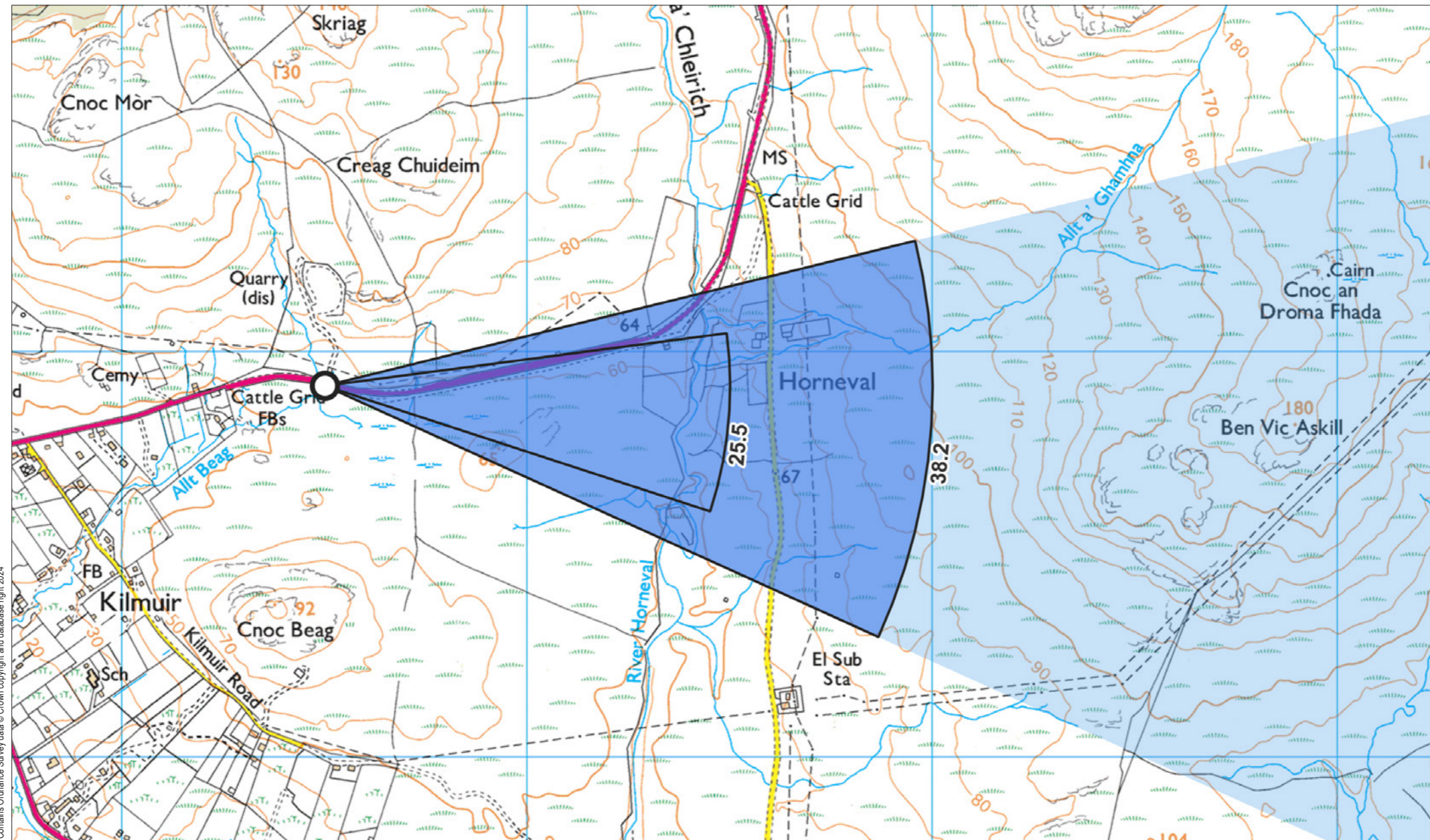


**Viewpoint 4: A850 east of Dunvegan**



Contains Ordnance Survey data © Crown copyright and database right 2024

File Ref: 0915-Highland-Council-180m-lp-montages

Grid Ref: 126501, 847917 Distance to nearest visible turbines: 3758m AOD: 57.5m

This viewpoint is located 1 mile east of the A836 in Dunvegan on the southern side of the road, looking downhill over a field gate to the south. There is room for one car to pull over at the viewpoint, with additional space available at a field gate on the northern side of the road approximately 50 meters to the west of the viewpoint.



**Viewpoint 4: A850 east of Dunvegan**

When viewed at a comfortable arm's length (approx. 500 mm), this printed image is representative of our detailed central vision, but is not representative of scale and distance.

Planar Projection

Distance to nearest turbine: 3.76 km

Camera: Nikon z6 2 - Full Frame

Focal length: 50 mm

Camera Height: 1.5 m

Date: 30/08/2022

Time: 15:12

ALTERNATE LAYOUT - 180m tip



**Viewpoint 4: A850 east of Dunvegan**

This image should be viewed at a comfortable arm's length (Approx. 500 mm)

Planar Projection

Distance to nearest turbine: 3.76 km

Camera: Nikon z6 2 - Full Frame

Focal length: 75 mm

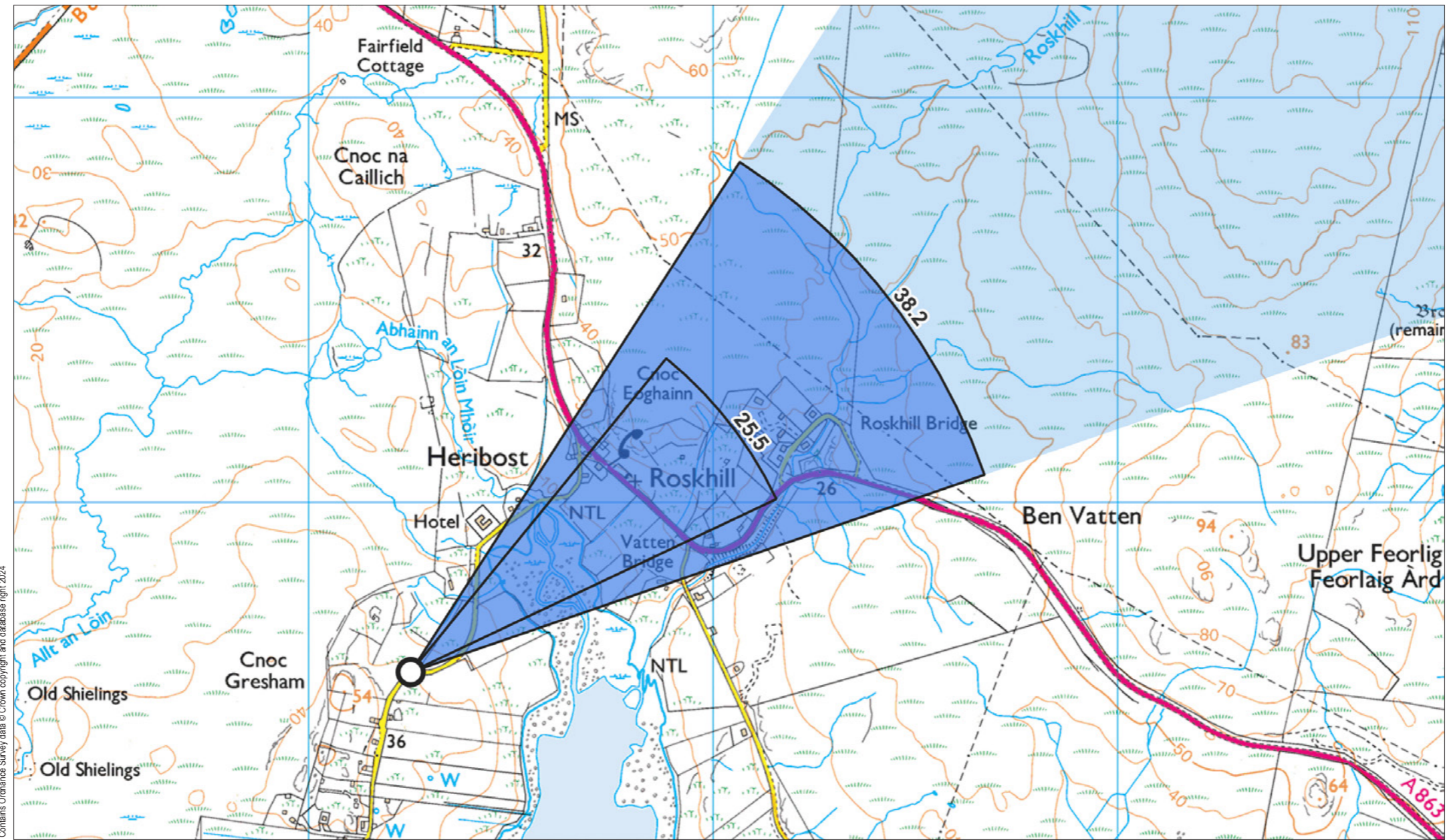
Camera Height: 1.5 m

Date: 30/08/2022

Time: 15:12

ALTERNATE LAYOUT - 180m tip

### Viewpoint 5: Roag



Grid Ref: 127252, 844582 Distance to nearest visible turbines: 4331m AOD: 30.3m

This viewpoint is located at a passing place on the western side of the Roag Orbost road, 0.5 miles south of the A863. The road is in open ground with post and view fences on either side. There is room for 2-3 cars to pull into the passing place at the viewpoint.



**Viewpoint 5: Roag**

When viewed at a comfortable arm's length (approx. 500 mm), this printed image is representative of our detailed central vision, but is not representative of scale and distance.

Planar Projection

Distance to nearest turbine: 4.33 km

Camera: Nikon z6 2 - Full Frame

Focal length: 50 mm

Camera Height: 1.5 m

Date: 30/08/2022

Time: 18:27

ALTERNATE LAYOUT - 180m tip



**Viewpoint 5: Roag**

This image should be viewed at a comfortable arm's length (Approx. 500 mm)

Planar Projection

Distance to nearest turbine: 4.33 km

Camera: Nikon z6 2 - Full Frame

Focal length: 75 mm

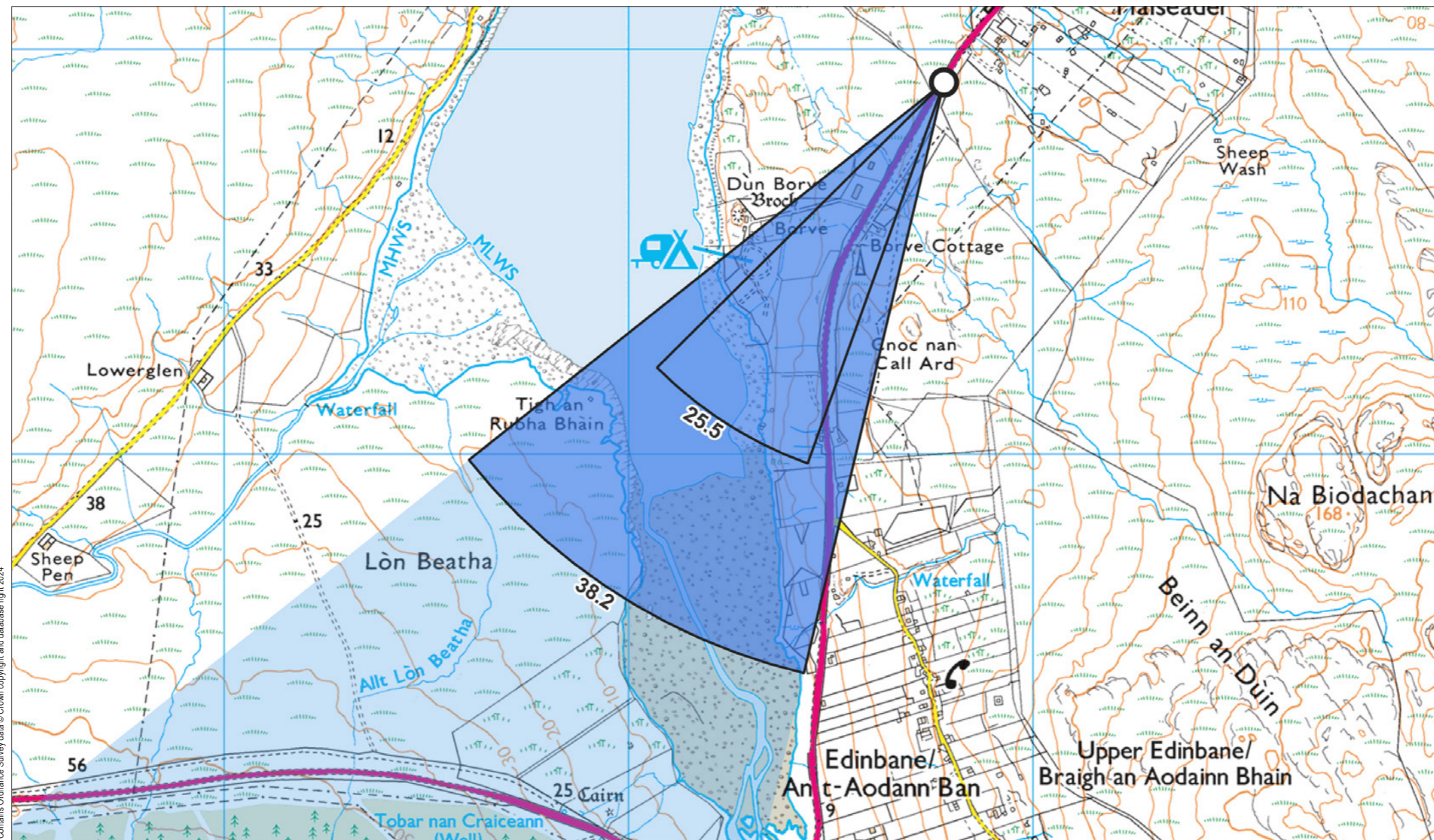
Camera Height: 1.5 m

Date: 30/08/2022

Time: 18:27

ALTERNATE LAYOUT - 180m tip

**Viewpoint 6: A850 Flashader**



Contains Ordnance Survey data © Crown copyright and database right 2024

File Ref: 0915-Highland-Council-180m-lp-montages

Grid Ref: 134780, 852920 Distance to nearest visible turbines: 5715m AOD: 34.4m

This viewpoint is located on a grass verge to the western side of the A850 to the south of Flashader. The viewpoint is at the southern end of a cut, about 20 meters downhill from a set of speed limit signs. There is no parking at the viewpoint. There is room for parking at the church in Flashader, or at a junction around 200-300 meters north of the viewpoint.



**Viewpoint 6: A850 Flashader**

When viewed at a comfortable arm's length (approx. 500 mm), this printed image is representative of our detailed central vision, but is not representative of scale and distance.

Planar Projection

Distance to nearest turbine: 5.72 km

Camera: Nikon z6 2 - Full Frame

Focal length: 50 mm

Camera Height: 1.5 m

Date: 30/08/2022

Time: 08:46

ALTERNATE LAYOUT - 180m tip





**Viewpoint 6: A850 Flashader**

This image should be viewed at a comfortable arm's length (Approx. 500 mm)

Planar Projection

Distance to nearest turbine: 5.72 km

Camera: Nikon z6 2 - Full Frame

Focal length: 75 mm

Camera Height: 1.5 m

Date: 30/08/2022

Time: 08:46

ALTERNATE LAYOUT - 180m tip