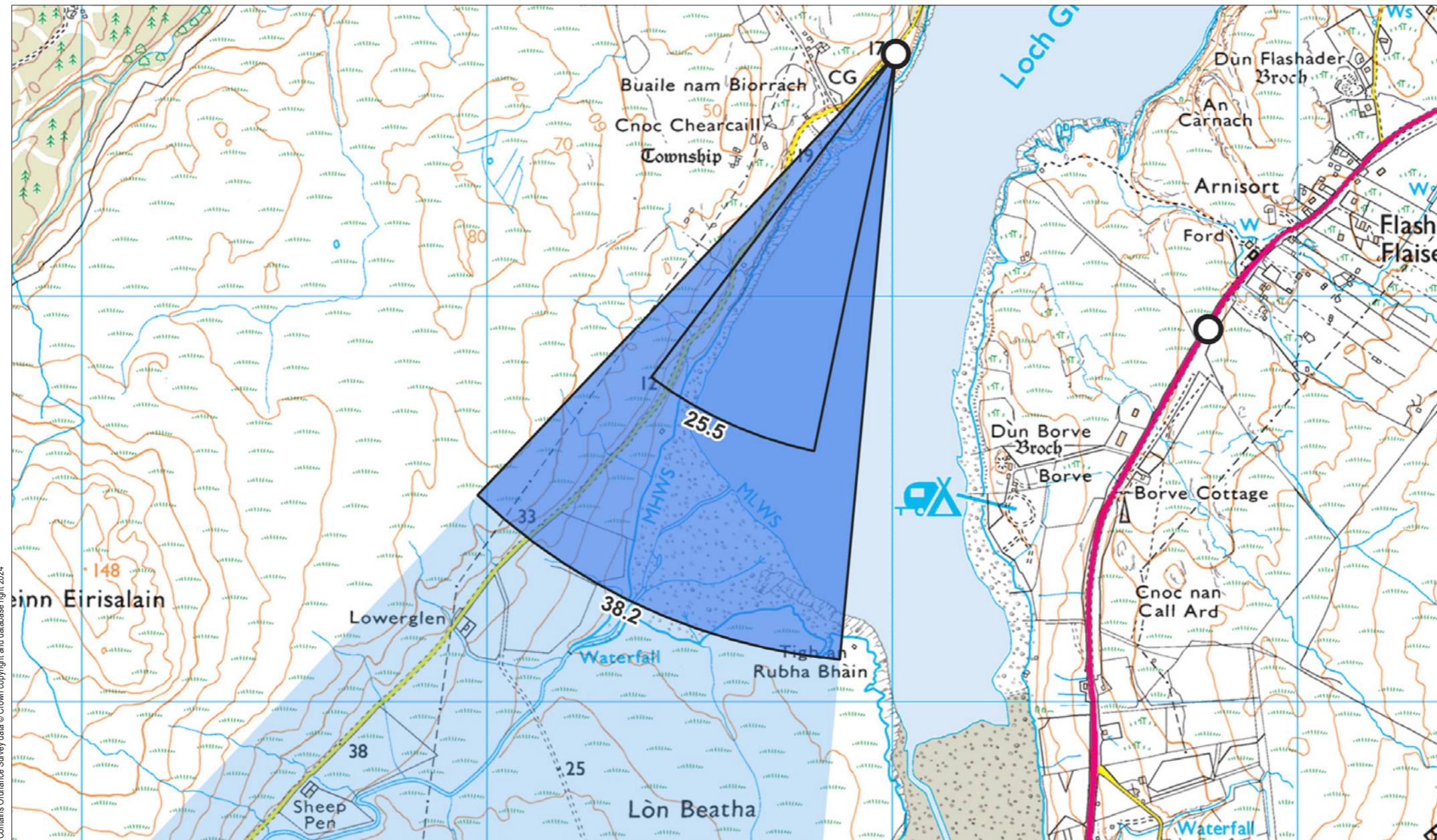


Viewpoint 7: Minor Road to Greshornish



Grid Ref: 134009, 853599 Distance to nearest visible turbines: 5949m AOD: 20m

This viewpoint is located at a passing place on the eastern side of an unclassified road on Greshornish, 2 miles north of the A850. The viewpoint surrounded by open, sloping grassland to the south of a wooded section of the road which flanks Redwood house. There is room for 2-3 cars to pull into the passing place at the viewpoint.



Viewpoint 7: Minor Road to Greshornish

When viewed at a comfortable arm's length (approx. 500 mm), this printed image is representative of our detailed central vision, but is not representative of scale and distance.

Planar Projection

Distance to nearest turbine: 5.95 km

Camera: Nikon z6 2 - Full Frame

Focal length: 50 mm

Camera Height: 1.5 m

Date: 30/08/2022

Time: 09:17

ALTERNATE LAYOUT - 180m tip



Viewpoint 7: Minor Road to Greshornish

This image should be viewed at a comfortable arm's length (Approx. 500 mm)

Planar Projection

Distance to nearest turbine: 5.95 km

Camera: Nikon z6 2 - Full Frame

Focal length: 75 mm

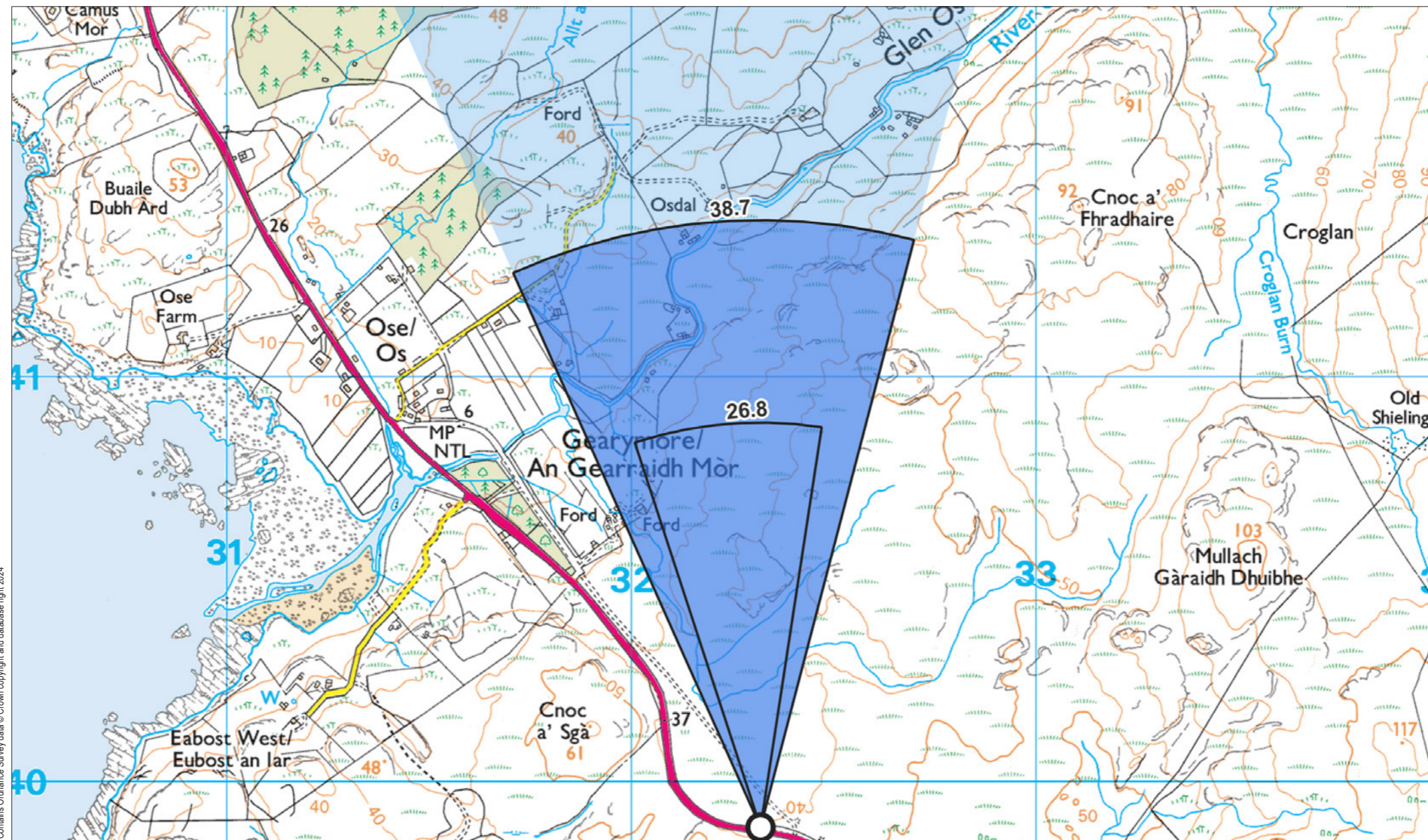
Camera Height: 1.5 m

Date: 30/08/2022

Time: 09:17

File Ref: 0915-Highland-Council-180m-tip-montages

Viewpoint 8: A863 near Gearymore



Grid Ref: 132319, 839888 Distance to nearest visible turbines: 6647m AOD: 40.3m

This viewpoint is located at a layover beside a field gate on the norther edge of the A863, 1.3 miles northwest of the Dun Beag carpark on an open section of road in the moorland. The layover is bordered by a post and wire fence with a field gate at the eastern end. There is parking for several cars.



Viewpoint 8: A863 near Gearymore

When viewed at a comfortable arm's length (approx. 500 mm), this printed image is representative of our detailed central vision, but is not representative of scale and distance.

Planar Projection

Distance to nearest turbine: 6.65 km

Camera: Canon EOS 5D - Full Frame

Focal length: 50 mm

Camera Height: 1.5 m

Date: 19/07/2022

Time: 09:09

ALTERNATE LAYOUT - 180m tip



Viewpoint 8: A863 near Gearymore

This image should be viewed at a comfortable arm's length (Approx. 500 mm)

Planar Projection

Distance to nearest turbine: 6.65 km

Camera: Canon EOS 5D - Full Frame

Focal length: 75 mm

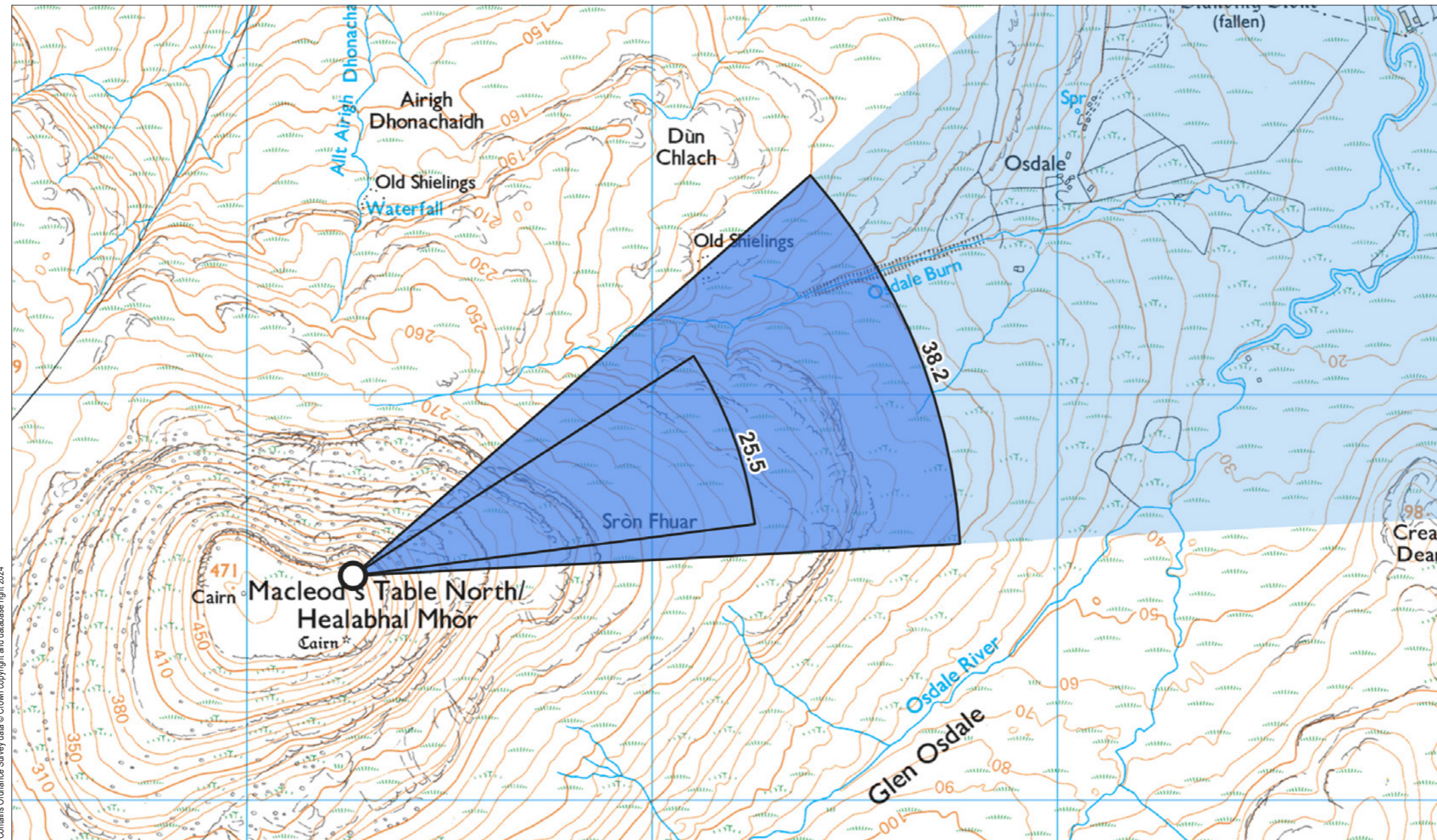
Camera Height: 1.5 m

Date: 19/07/2022

Time: 09:09

ALTERNATE LAYOUT - 180m tip

Viewpoint 9: Macleod's Table North / Healabhal Mhor



Contains Ordnance Survey data © Crown copyright and database right 2024

File Ref: 0915-Highland-Council-180m-lp-montages

Grid Ref: 122261, 844554 Distance to nearest visible turbines: 8591m AOD: 457.6m

This viewpoint is located close to the eastern edge of the plateau peak of Healabhal Mhor (Macleods Table North). The viewpoint is accessible on foot across moorland from the B884 at Dun Osdale, where there is space to park beside the road.



Viewpoint 9: Macleod's Table North / Healabhal Mhor

When viewed at a comfortable arm's length (approx. 500 mm), this printed image is representative of our detailed central vision, but is not representative of scale and distance.

Planar Projection

Distance to nearest turbine: 8.59 km

Camera: Nikon z6 2 - Full Frame

Focal length: 50 mm

Camera Height: 1.5 m

Date: 29/08/2022

Time: 17:16

ALTERNATE LAYOUT - 180m tip



Viewpoint 9: Macleod's Table North / Healabhal Mhor

This image should be viewed at a comfortable arm's length (Approx. 500 mm)

Planar Projection

Distance to nearest turbine: 8.59 km

Camera: Nikon z6 2 - Full Frame

Focal length: 75 mm

Camera Height: 1.5 m

Date: 29/08/2022

Time: 17:16

ALTERNATE LAYOUT - 180m tip