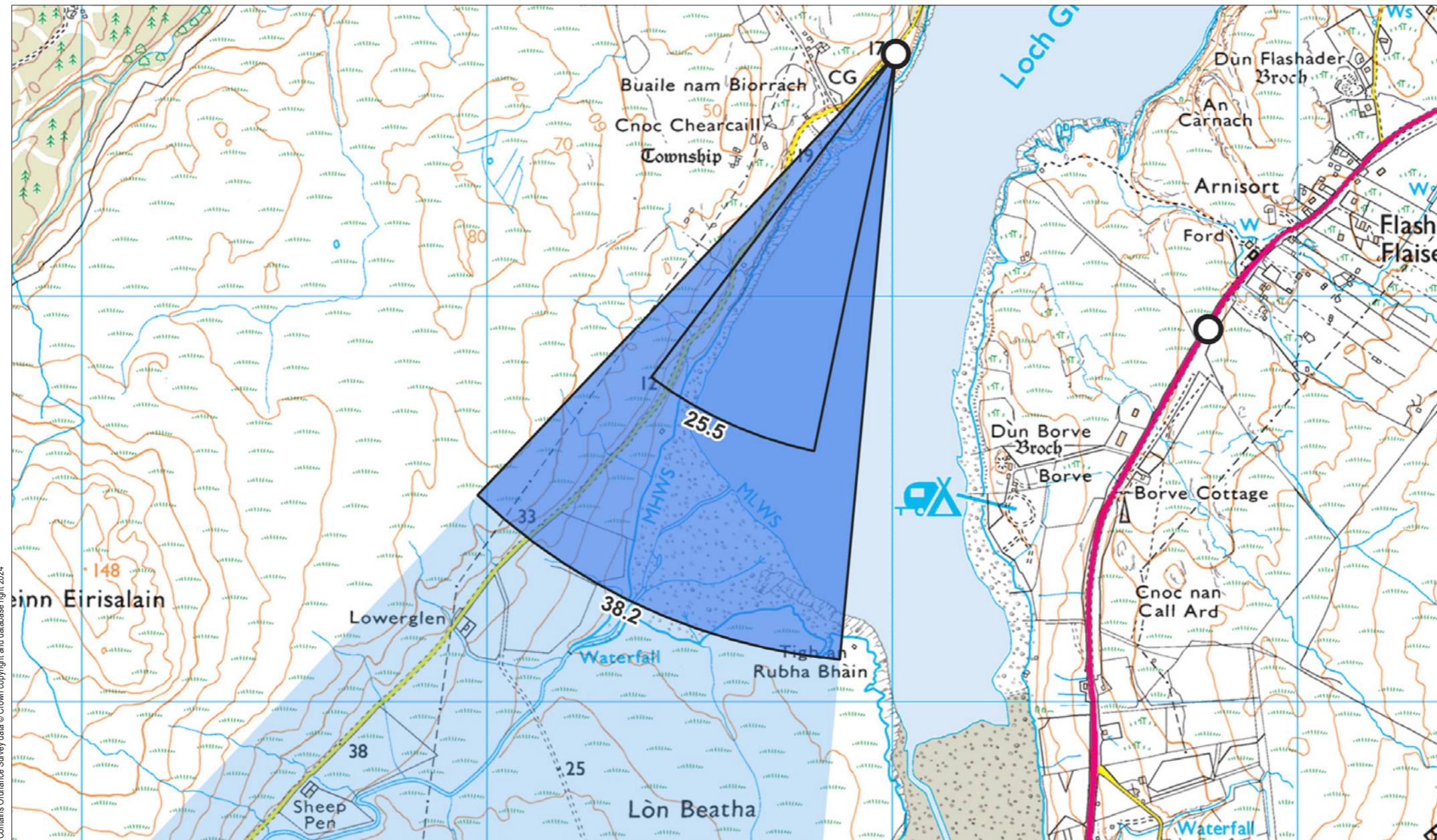


Viewpoint 7: Minor Road to Greshornish



Contains Ordnance Survey data © Crown copyright and database right 2024

File Ref: 0915-Highland-Council-200m-lp-visuals

Grid Ref: 134009, 853599 Distance to nearest visible turbines: 5949m AOD: 20m

This viewpoint is located at a passing place on the eastern side of an unclassified road on Greshornish, 2 miles north of the A850. The viewpoint surrounded by open, sloping grassland to the south of a wooded section of the road which flanks Redwood house. There is room for 2-3 cars to pull into the passing place at the viewpoint.



Viewpoint 7: Minor Road to Greshornish

When viewed at a comfortable arm's length (approx. 500 mm), this printed image is representative of our detailed central vision, but is not representative of scale and distance.

Planar Projection

Distance to nearest turbine: 5.95 km

Camera: Nikon z6 2 - Full Frame

Focal length: 50 mm

Camera Height: 1.5 m

Date: 30/08/2022

Time: 09:17

File Ref: 0915-Highland-Council-200m-tip-visuals



Viewpoint 7: Minor Road to Greshornish

This image should be viewed at a comfortable arm's length (Approx. 500 mm)

Planar Projection

Distance to nearest turbine: 5.95 km

Camera: Nikon z6 2 - Full Frame

Focal length: 75 mm

Camera Height: 1.5 m

Date: 30/08/2022

Time: 09:17

File Ref: 0915-Highland-Council-200m-tip-visuals



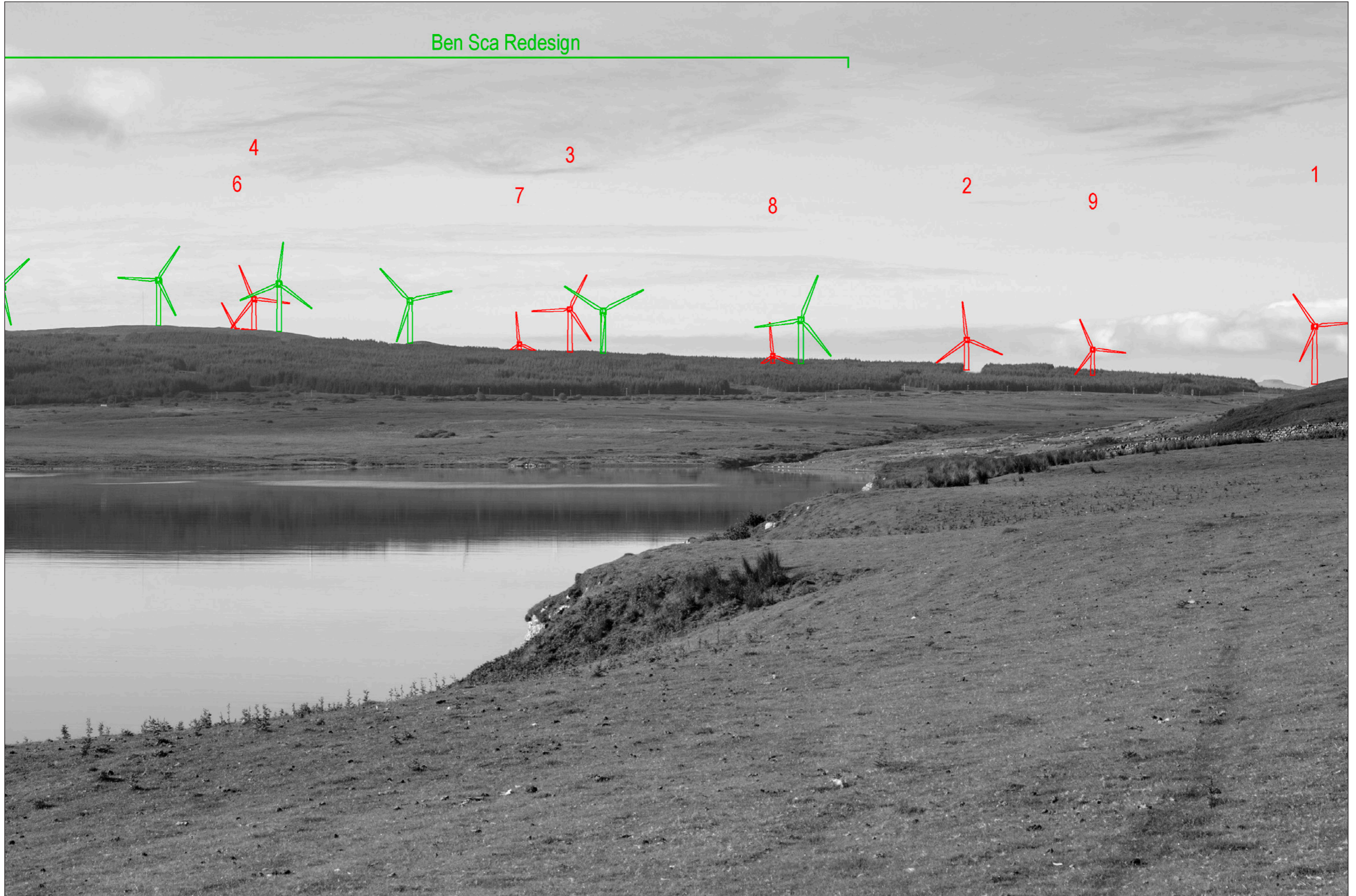
Viewpoint 7: Minor Road to Greshornish - Monochrome Analysis

This image should be viewed at a comfortable arm's length (Approx. 500 mm)

Planar Projection Distance to nearest turbine: 5.95 km Camera: Nikon z6 2 - Full Frame Focal length: 75 mm Camera Height: 1.5 m Date: 30/08/2022 Time: 09:17

SUBMITTED LAYOUT - 200m tip (CONSENTED CUMULATIVE)

Ben Sca Redesign



Viewpoint 7: Minor Road to Greshornish - Monochrome Analysis

This image should be viewed at a comfortable arm's length (Approx. 500 mm)

Planar Projection

Distance to nearest turbine: 5.95 km

Camera: Nikon z6 2 - Full Frame

Focal length: 75 mm

Camera Height: 1.5 m

Date: 30/08/2022

Time: 09:17

SUBMITTED LAYOUT - 200m tip (PROPOSED CUMULATIVE)