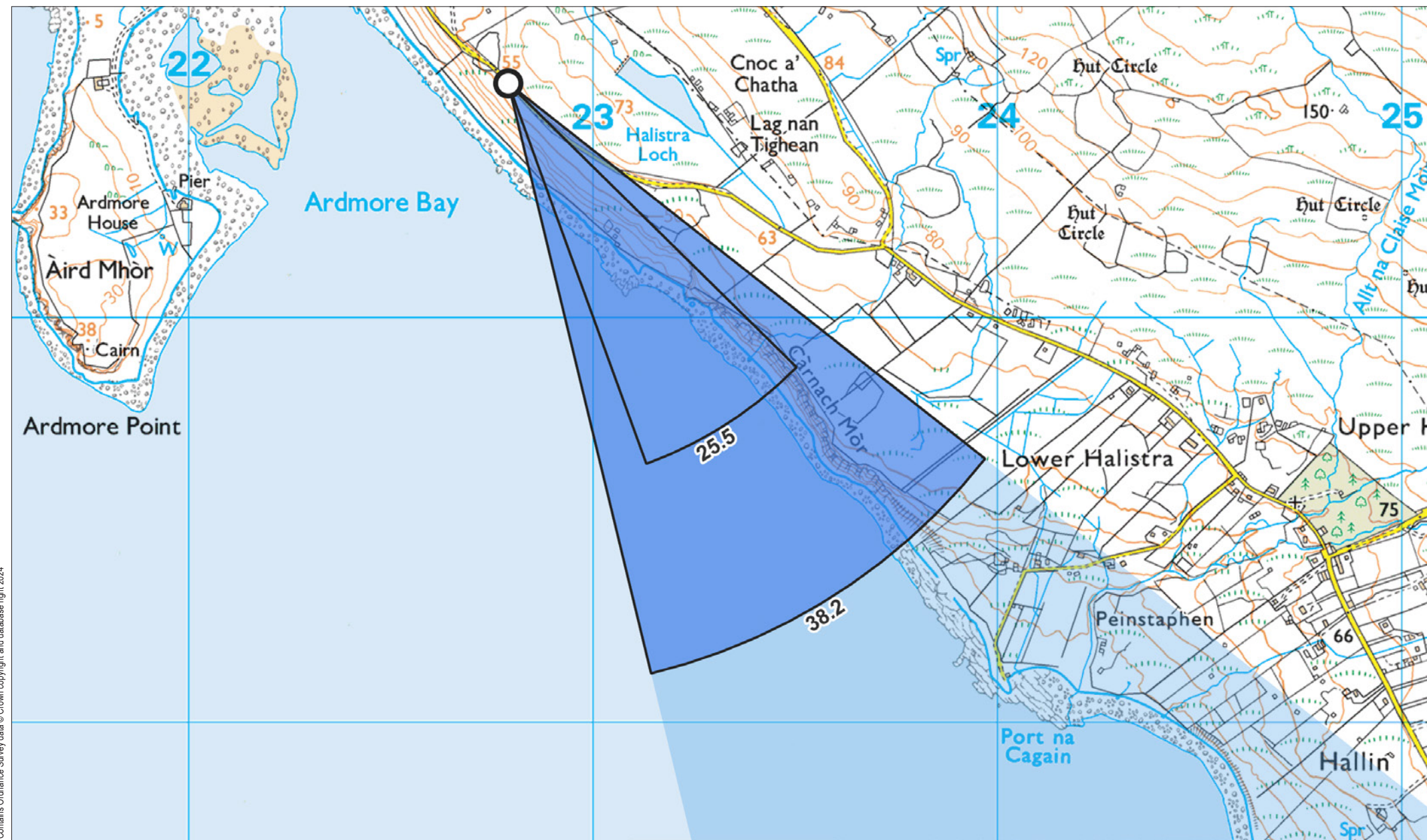


Viewpoint 13: Ardmore, Waternish



Grid Ref: 122790, 860579 Distance to nearest visible turbines: 14025m AOD: 59.6m

This viewpoint is located at a passing place on an unclassified road overlooking Ardmore Bay. The viewpoint is located around 20 meters to the southeast of the gate to property number 2B and is surrounded by open ground on both sides of the road. There is room for 2-3 cars to pull in at the passing place.



Viewpoint 13: Ardmore, Waternish

When viewed at a comfortable arm's length (approx. 500 mm), this printed image is representative of our detailed central vision, but is not representative of scale and distance.

Planar Projection Distance to nearest turbine: 14.03 km Camera: Nikon z6 2 - Full Frame Focal length: 50 mm Camera Height: 1.5 m Date: 30/08/2022 Time: 15:49

SUBMITTED LAYOUT - 200m tip



Viewpoint 13: Ardmore, Waternish

This image should be viewed at a comfortable arm's length (Approx. 500 mm)

Planar Projection Distance to nearest turbine: 14.03 km Camera: Nikon z6 2 - Full Frame Focal length: 75 mm Camera Height: 1.5 m Date: 30/08/2022 Time: 15:49

SUBMITTED LAYOUT - 200m tip