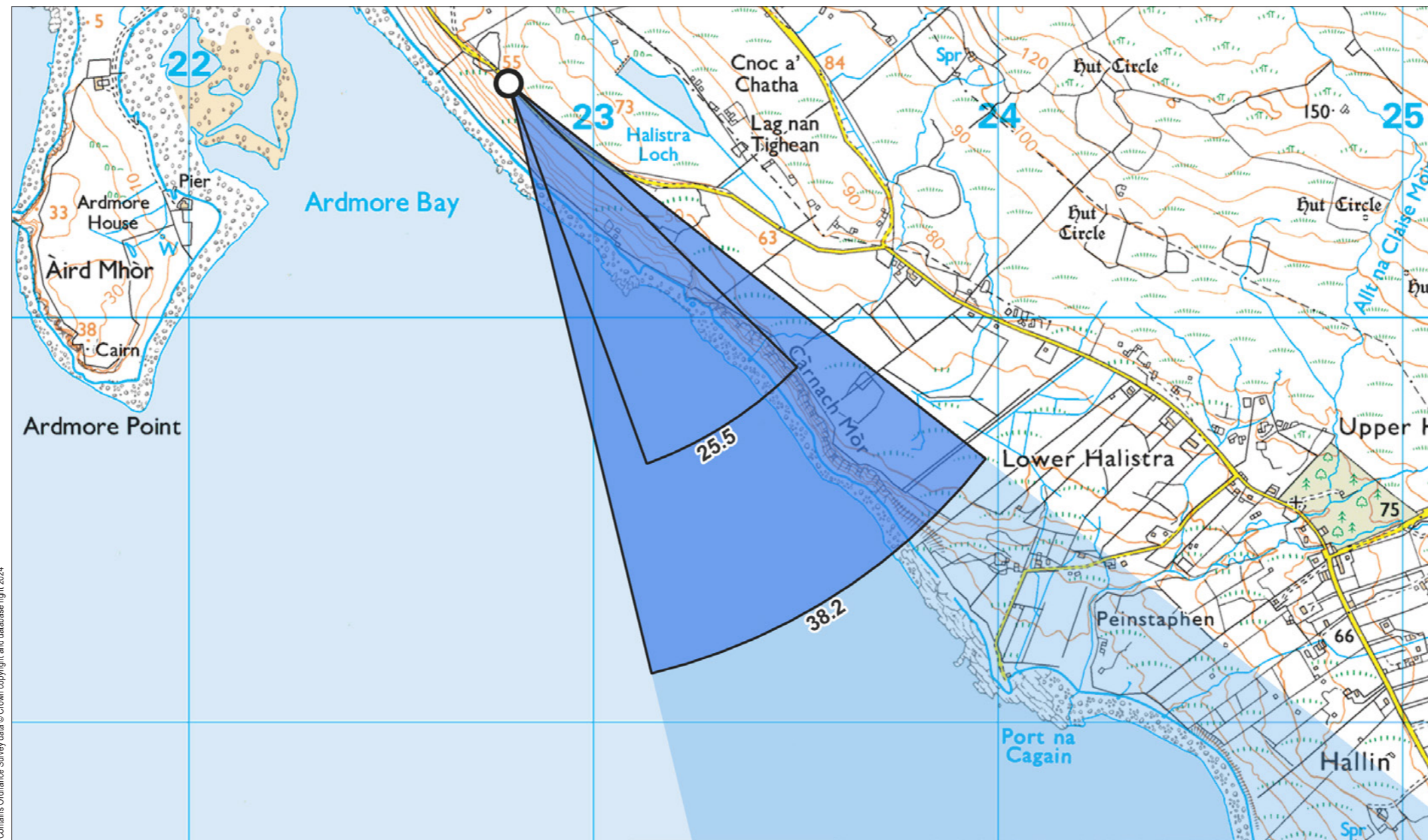


Viewpoint 13: Ardmore, Waternish



Contains Ordnance Survey data © Crown copyright and database right 2024

File Ref: 0915-Highland-Council-180m-1p-montages

Grid Ref: 122790, 860579 Distance to nearest visible turbines: 14025m AOD: 59.6m

This viewpoint is located at a passing place on an unclassified road overlooking Ardmore Bay. The viewpoint is located around 20 meters to the southeast of the gate to property number 2B and is surrounded by open ground on both sides of the road. There is room for 2-3 cars to pull in at the passing place.



Viewpoint 13: Ardmore, Waternish

When viewed at a comfortable arm's length (approx. 500 mm), this printed image is representative of our detailed central vision, but is not representative of scale and distance.

Planar Projection Distance to nearest turbine: 14.03 km Camera: Nikon z6 2 - Full Frame Focal length: 50 mm Camera Height: 1.5 m Date: 30/08/2022 Time: 15:49

ALTERNATE LAYOUT - 180m tip



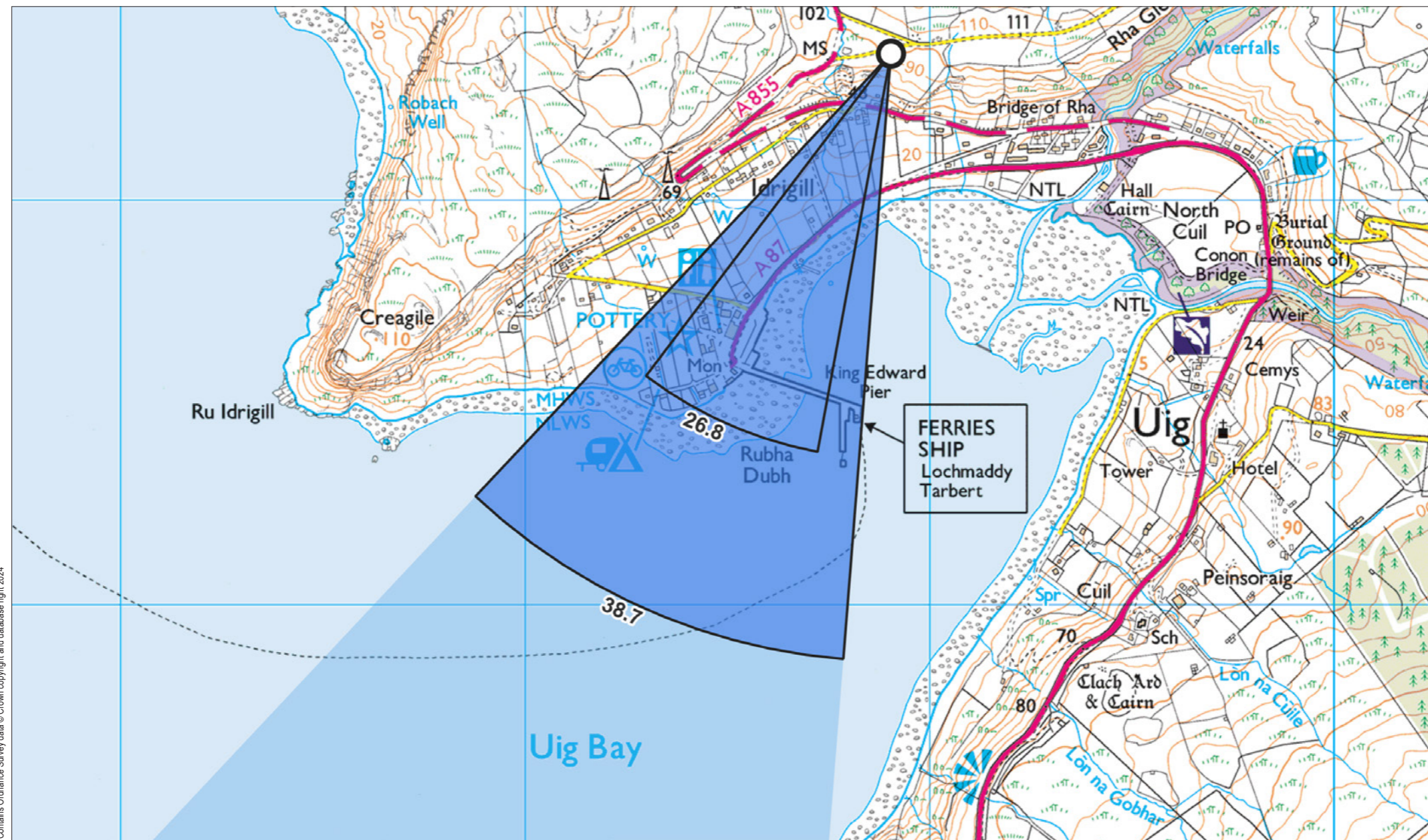
Viewpoint 13: Ardmore, Waternish

This image should be viewed at a comfortable arm's length (Approx. 500 mm)

Planar Projection Distance to nearest turbine: 14.03 km Camera: Nikon z6 2 - Full Frame Focal length: 75 mm Camera Height: 1.5 m Date: 30/08/2022 Time: 15:49

ALTERNATE LAYOUT - 180m tip

Viewpoint 14: Minor road above Uig



Contains Ordnance Survey data © Crown copyright and database right 2024

File Ref: 0915-Highland-Council-180m-lp-montages

Grid Ref: 138904, 864363 Distance to nearest visible turbines: 17683m AOD: 101.1m

This viewpoint is located at the Idrigil Bay viewpoint at the intersection of an unclassified road and the B855 to the north of Uig. The viewpoint is set in open ground at the intersection above a steep slope overlooking Uig. There is parking space for several cars at the viewpoint.



Viewpoint 14: Minor road above Uig

When viewed at a comfortable arm's length (approx. 500 mm), this printed image is representative of our detailed central vision, but is not representative of scale and distance.

Planar Projection Distance to nearest turbine: 17.68 km Camera: Canon EOS 5D - Full Frame Focal length: 50 mm Camera Height: 1.5 m Date: 19/07/2022 Time: 12:16

ALTERNATE LAYOUT - 180m tip



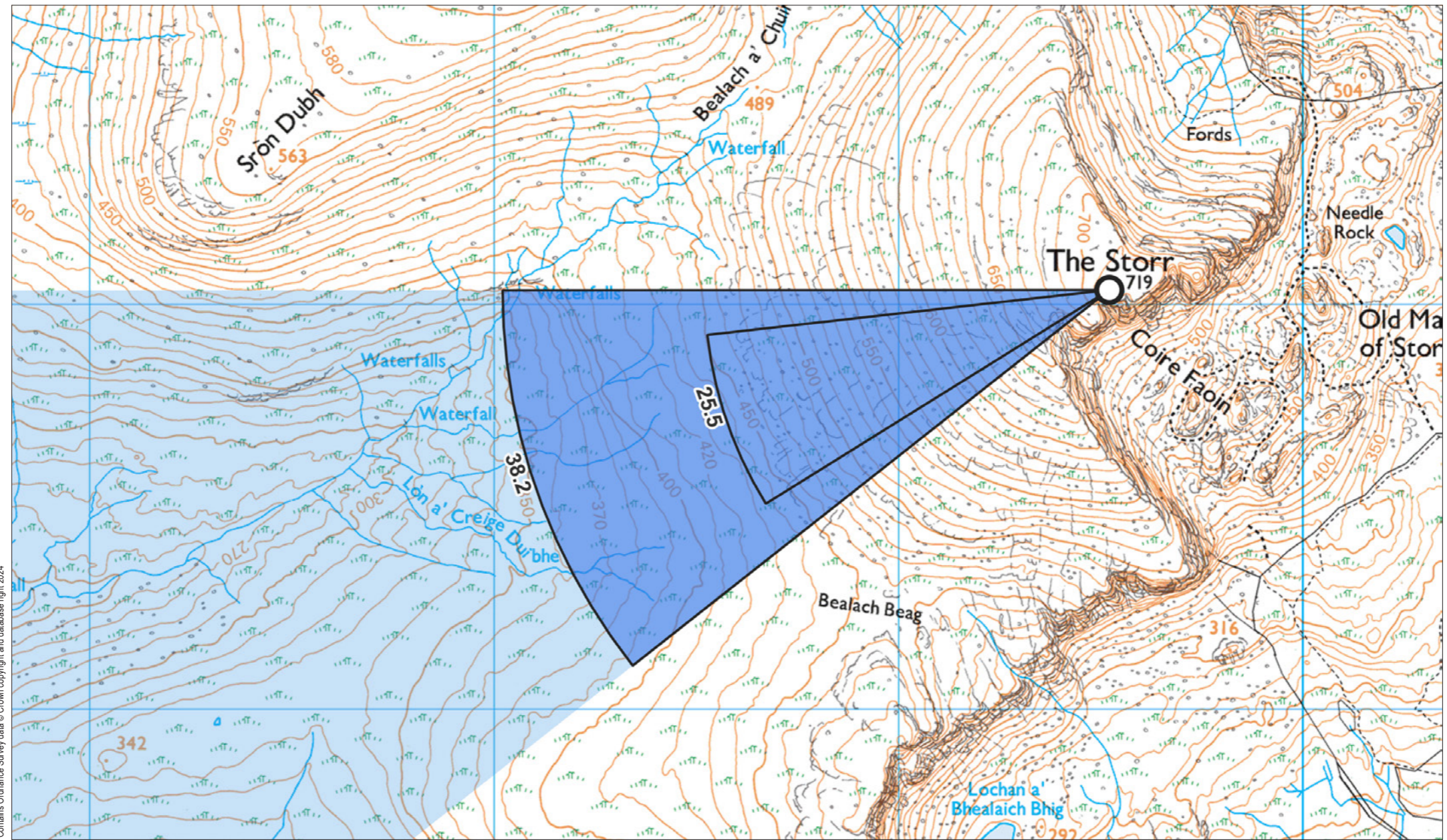
Viewpoint 14: Minor road above Uig

This image should be viewed at a comfortable arm's length (Approx. 500 mm)

Planar Projection Distance to nearest turbine: 17.68 km Camera: Canon EOS 5D - Full Frame Focal length: 75 mm Camera Height: 1.5 m Date: 19/07/2022 Time: 12:16

ALTERNATE LAYOUT - 180m tip

Viewpoint 15: The Storr



Grid Ref: 149520, 854037 Distance to nearest visible turbines: 18051m AOD: 720.4m

This viewpoint is located at the summit of the Storr, the viewpoint is accessible by foot from The Old Man of Storr carpark on the A855, to the north of Portree. The viewpoint is set on high open ground at the to peak, with open views in all directions.



Viewpoint 15: The Storr

When viewed at a comfortable arm's length (approx. 500 mm), this printed image is representative of our detailed central vision, but is not representative of scale and distance.

Planar Projection Distance to nearest turbine: 18.05 km Camera: Nikon z6 2 - Full Frame Focal length: 50 mm Camera Height: 1.5 m Date: 29/08/2022 Time: 14:04

ALTERNATE LAYOUT - 180m tip



Viewpoint 15: The Storr

This image should be viewed at a comfortable arm's length (Approx. 500 mm)

Planar Projection Distance to nearest turbine: 18.05 km Camera: Nikon z6 2 - Full Frame Focal length: 75 mm Camera Height: 1.5 m Date: 29/08/2022 Time: 14:04

ALTERNATE LAYOUT - 180m tip